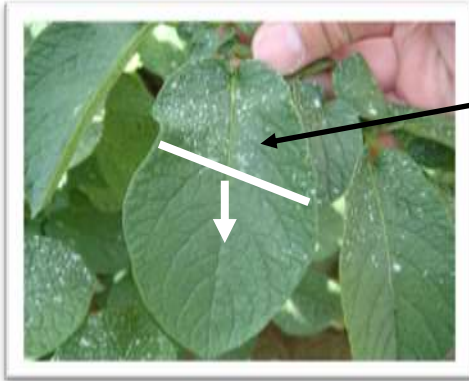


Foliar and Tuber Blight control

As the newer blight types can thrive in a wider range of conditions and are much more aggressive the importance of protection of new growth during the rapid canopy phase is even greater to prevent blight incidence early into the crop



- **Spray deposit following a blight spray, showing unsprayed areas of the leaf due to shading**
- **Using a product that will move into growing leaves will optimise protection**
- **The 'new growth effect' and rainfastness of Ranman make it an ideal choice during rapid canopy**

- **Ranman Top** provides excellent protection of new growth ie. Expanding leaves throughout the rapid canopy growth stage.
- **Excellent protectant of foliar blight - 3* rating** (independent EuroBlight ratings)
- **Use from rapid Canopy to before burn-off**

**Rainfast in
just 15
minutes!**

The Number 1 product for tuber blight control



- **Ranman Top** has consistently proven its activity on tuber blight
- Many trials from the UK show that **Ranman Top** is No1 for tuber blight control.
- Ideal for mid -late season application
- 3* rating for tuber blight

Ranman Top - 10 ha pack

- Contains cyazofamid

Ranman Top is a registered Trademark of ISK Ltd,